

**Let's Get  
Ready for  
7th Grade**

Stone Middle School – Academic Advising 23-24

**First, there are some people  
you should know!**



# Administrators



**Mrs. Williams**

**Principal**



**Ms. Brumett**

**Director of  
Student Services**



**Mr. Davis**

**Administrator for  
Last Names: A-Le**



**Ms. Levy**

**Administrator for  
Last Names: Li-Z**

# School Counselors



**MS. MARREFI**

Last Names: A-Gq



**MR. GARCIA**

Last Names: Gr-Og



**MS. BRICKER**

Last Names: Oh-Z



# After School Program

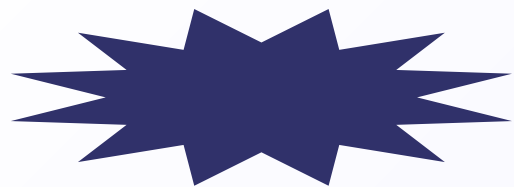


Mr. Anderson  
After School Specialist

- Offered everyday!
  - Late buses offered Monday-Thursday
- Academic support on Tuesdays with teachers and clubs such as sketching, sign language, softball, open gym, and more!
- Activities/clubs offered change every quarter
- For more information, please visit [StoneAfterschool.com](http://StoneAfterschool.com) or reach out to Mr. Anderson



**AWESOMENESS.  
EVERYDAY.**



**Let's learn  
some more  
about Stone  
MS!**



**HOW DO I  
CHOOSE MY  
CORE  
CLASSES?**



# Core Classes

English OR  
English Honors

History OR  
History Honors

Science OR  
Science Honors

Math 7 OR  
Math 7 Honors

Why try honors courses?





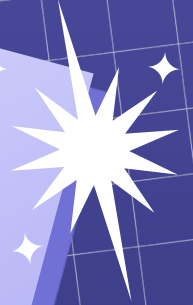
# Are You Ready for Honors?

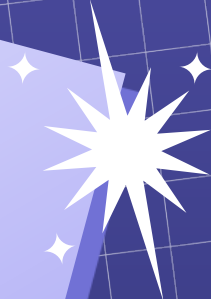
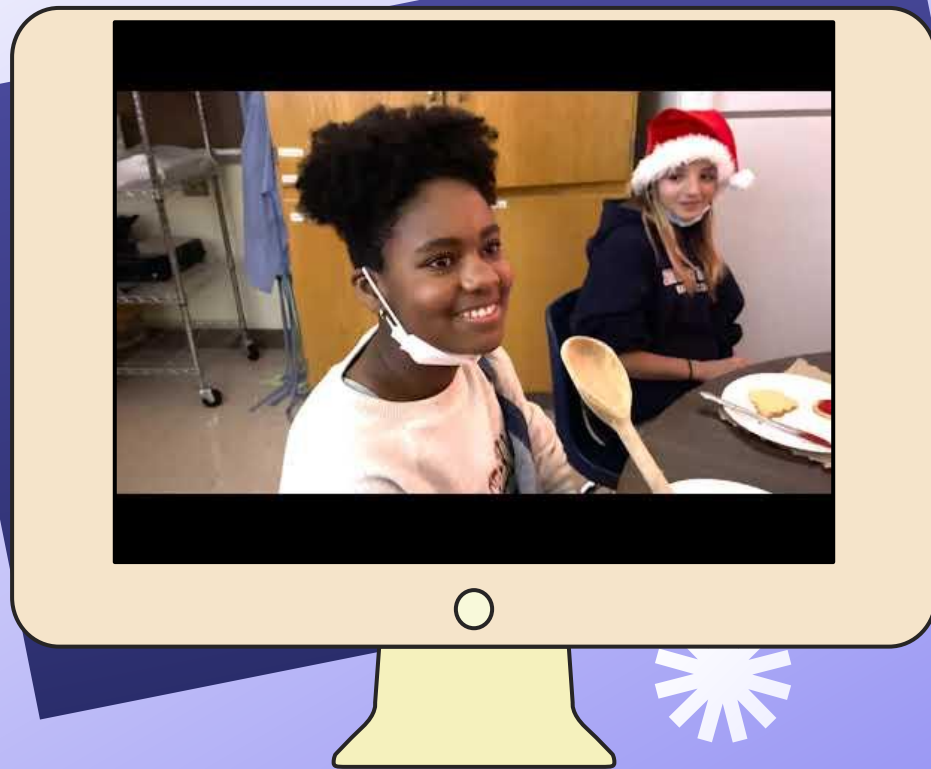
- Do you have a genuine interest and a willingness to learn in the specific subject area?
- Are you willing to take initiative and study outside of school hours?
- Are you willing to challenge yourself and see that challenge through?
- Are you willing to advocate for yourself? (Asking the teacher questions, emailing about concerns, seeking help when struggling)

H

- Can you balance extracurricular activities with Honors courses?
- Are your parents/guardians willing to answer these questions the same way you are?

**HOW DO I  
CHOOSE  
MY ELECTIVE  
CLASSES?**





<p><b><u>Option 1:</u></b>  <b>Two Full Year courses</b>  <b>(Example Below)</b></p>	<p><b><u>Option 2:</u></b>  <b>One Full Year courses +</b>  <b>two semester (Example</b>  <b>Below)</b></p>	<p><b><u>Option 3:</u></b>  <b>Four Semester Courses</b>  <b>(Example Below)</b></p>
<p><b>1st Year Long Course:</b>  <b>Leadership Course</b></p>	<p><b>1 Year Long:</b>  <b>Orchestra</b></p>	<p><b>1st Semester:</b>  <b>Family and Consumer</b>  <b>Sciences 1</b>  <b>AND</b>  <b>Engineering 1</b></p>
<p><b>2nd Year Long Course:</b>  <b>Chorus</b></p>	<p><b>1st Semester:</b>  <b>Family and Consumer</b>  <b>Sciences</b>  <b>2nd Semester:</b>  <b>Engineering 1</b></p>	<p><b>2nd Semester:</b>  <b>Family and Consumer</b>  <b>Sciences 2</b>  <b>AND</b>  <b>Engineering 2</b></p>

# Year Long Electives

## Performing Arts/Music:

- Band
- Percussion
- Chorus
- Orchestra

## World Languages:

- French I
- Spanish I
- Spanish for Heritage Speakers I / Spanish Immersion I  
(London Towne Only; only 1 HS credit)

**Student  
Leadership**  
(requires  
application)

**NEW:  
Broadcast  
Journalism**  
(requires  
application)

# Semester Elective Options

## Theater Arts Courses:

- Theater Arts Appreciation
- Advanced Theater Arts and Appreciation\*prerequisite is Theater Arts Appreciation

## Art Courses:

- Art Foundations
- 3D Art Exploration\*prerequisite Art Foundations
- Art Extensions\*prerequisite Art Foundations

## Family and Consumer Science (FACS)

- FACS 1
- FACS 2\*prerequisite is FACS 1

## Engineering

- Engineering 1
- Engineering 2\*prerequisite is Engineer 1

## Technology Courses:

- Computer Solutions
- Coding and Innovative Technologies\*prerequisite is Comp Solutions

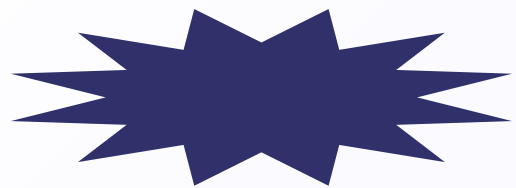
## Exploratory Music:

- Music Participation Lab 1
- Music Participation Lab 2\*prerequisite is Music Lab 1

## Study Skills:

- Strategies for Success





# **Transitioning to MS**



# Bell Schedule

School doors open at 7:10 AM and the school day ends at 2:15 PM.

There is bell that indicates if you are tardy to a class for each course.

A Days are Odd: Periods 1, 3, 5, 7

B Days are Even: Periods 2, 4, 6, 8

Your lunch times depends on your 5th or 6th period. There are 3 lunch times at Stone and you can sit wherever you like!

## What is Panther Block (PB)/Advisory?

There are two parts of 4th Period/PB.

PB Part A/Advisory: We use this time to participate in social emotional learning (SEL). We also learn study skills, digital citizenship and other activities..

Flexback: You return to a specific period that is rotated.

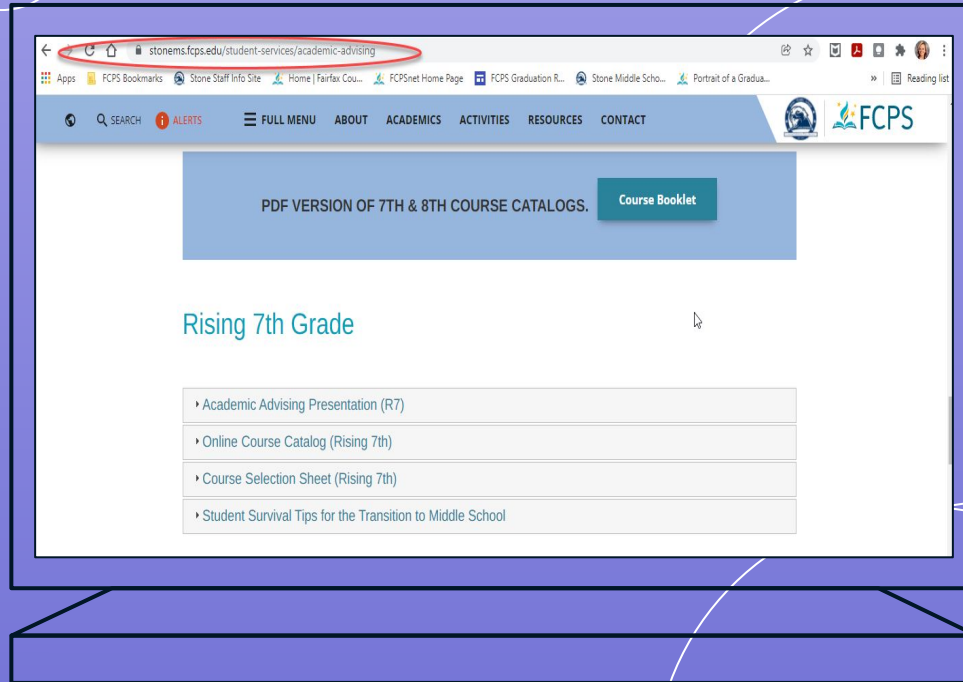
# Physical Education & Health

- All students take Physical Education (PE) and Health in 7th and 8th Grade.
- Students use the locker rooms to change into their PE gear or active wear. You will also be assigned a locker.
- PE uniforms can be picked up on Back to School Night if you select to purchase one.



# What Now?

Check out our website for additional resources and even more information!



# Where do I find course selection information?

Fairfax County PUBLIC SCHOOLS

COURSES GROUPS RESOURCES TOOLS

241\_Stone MS: Academic Advising/Course Selection Group 2023

Notifications

**STONE MS COURSE SELECTION**  
2023-2024

Group Options

Updates

Discussions (6)

Albums

Members (750)

**Resources**

Zoom

Access Code

Resources

Add Resources Options

<input type="checkbox"/>	Title	2 of 2
<input type="checkbox"/>	<b>Rising 7th Graders (Current 6th Graders)</b> Added by Alison Costanza · Feb 7, 2023	⚙️
<input type="checkbox"/>	<b>Rising 8th Graders (Current 7th Graders)</b> Added by Alison Costanza · Feb 7, 2023	⚙️

Applications for Leadership & Panther News available in this folder

# How do I choose my classes?

1. Review course selection sheet and Schoology site with your parent/guardian.
2. Complete your Course Selection form with your counselor or teacher. Please write the due date **MARCH 2** on the top of your form.
3. If you are unsure about selections, talk to your teacher or school counselor for suggestions.



# Q&A



✦ CREDITS: This presentation template was created by **Slidesgo**, including icons by **Flaticon** and infographics & images by **Freepik** ✦